



eurofins

Consumer Products
Assurance

Inspection Sample Report

Footwear


Thank you for your interest
in our inspection sample report!

Contact us for any enquiries
www.eurofins.com/assurance/consumer-products/



Office	AQM China	
Report number	[REDACTED]	
Inspection type	FI1	FINAL
Inspection date	[REDACTED]	
Inspection city	[REDACTED]	
Inspector	[REDACTED]	

Customer	[REDACTED]
Brand	[REDACTED]
Agent	[REDACTED]
Supplier	[REDACTED]
Factory	[REDACTED]

	Order number	Reference / Style	Color	Description
	[REDACTED]	[REDACTED]	SOFT KAKHY+SOFT BLACK+SOFT TAUPE	ANKLE BOOT
	Ordered quantity	Packed quantity %	Presented quantity %	Cartons quantity
	4850+38=4888	4850+38=4888 100%	4850+38=4888 100%	557+4=561

Inspection performed with	Purchase Order	Packing list	Conformity sample	Technical file	Labtest	Inspection level	II
	YES	YES	YES	YES	NO	Quantity inspected	200

Inspection results

	1.Workmanship	2.Conformity	3.Product Measurement	4.On-site Test	5.Packing
Passed				X	
Failed	X	X			X
Reservations					

1.	AQL	Level	Critical defects		Major defects		Minor defects	
		Allowance	0,0		2.5		4.0	
			accepted	refused	accepted	refused	accepted	refused
		N° of defects	0	1	10	11	14	15
	Nature of most important defects		0		14		3	
					asymetric shoes		uncut threads	
					weak cementing			
					glue mark			

2.	Conformity	Fail	C1 bulk metal logo position at outside side top same as file and kakhy sample,taupe sample ,but it different from black sample at back center top 100%(the kakhy sample and taupe sample with red lock,black sample with yellow lock)
----	------------	------	---

3.	Product Measurement	N/A	
----	---------------------	-----	--

4.	On-site Test	Pass	ok
----	--------------	------	----

5.	Packing	Fail	P1 Carton gw over 15kg for those packing 12pairs cartons_100%.
----	---------	------	--

General comments	Arrival/Starting is 9:00 AM,end inspection time is 17:30 PM. Additional defects not listed in AQL:glue mark x2pc, uncut threads 2pc picked ctns didn't be sealed with AQM tape for factory have no worker to re-pack all inspected goods
------------------	--

Sealed bag	Size	Color	Qty	Problems (Dx, Cx, Mx)	Size	Color	Qty	Problems (Dx, Cx, Mx)
	39	black	1	D2/D3				
Tracking number / Seal number	[REDACTED]							

© Eurofins Consumer Product Assurance - All rights reserved

Ref		Item description		ANKLE BOOT	Customer	
Points to check		Quantity checked	Pass / Fail	% of products	Comments	
2.1	Product general checking	200	Pass	100%	OK	
2.2	Conformity with sample-tech file	200	Fail	100%	C1 bulk metal logo position at outside side top same as file and kakhy sample,taupe sample ,but it different from black sample at back center top 100%(the kakhy and taupe sample with red lock,black sample with yellow lock)	
2.3	Conformity of raw material, fabric, handfeel	200	Pass	100%	meet sample	
2.4	Conformity of product symmetry	200	Pass	100%	ok	
2.5	Conformity of color	200	Pass	100%	grade 4-5 for all collars	
2.6	Conformity and position of embroideries-print (position measure)		N/A	100%		
2.7	Conformity of button, snaps, velcro, zip		N/A	100%		
2.8	Conformity of accessories	200	Pass	100%	metal logo and label same as sample	
2.9	Pictogram sticker	200	Pass	100%	presented on tag	
2.10	Import sticker	200	Pass	100%	presented on tag	
2.11	PO number print	200	Pass	100%	printed style number and supplier code	
2.12	Size marking	200	Pass	100%	engraved on outsole bottom	
2.13	Commercial tag	200	Pass	100%	ok	
2.14	Alarm tag		N/A	100%		
2.15	RF tag		N/A	100%	ok	
2.16	Price tag/sticker		N/A	100%	ok	

[illegible]

[illegible]

Ref		Item Description		ANKLE BOOT	Customer	
Points to check		Quantity checked	Pass / Fail	% of products	Comments	
5.1	Cartons general checking	48	Pass	100%	ok	
5.2	Cartons shipping marks	48	Pass	100%	ok	
5.3	Carton closure way	48	Pass	100%	sealed with  logo tape	
5.4	Size of cartons	4	Pass	100%	74x65x36cm,95x39x36cm,64x39x36cm,64x50x36cm	
5.5	Weight of cartons	4	Fail	100%	P1 carton gw over 15kg for packing 12pairs cartons	
5.6	Carton opening way	48	Pass	100%	ok	
5.7	Carton thickness	1	Pass	100%	5ply 0.6cm	
5.8	Logistic control, assortment and or homogenous cartons	48	Pass	100%	ok	
5.9	Hanger		N/A	100%		
5.10	Silk - tissue paper to protect	200	Pass	100%	 logo tissue paper	
5.11	Anti-humidity bag	200	Pass	100%	each inner box with one MICRO-PACK	
5.12	ECOBX Print	48	Pass	100%	ok	
5.13	Inner box	200	Pass	100%	ok	
5.14	Inner box's sticker	200	Pass	100%	ok	
5.15	Individual polybag	200	Pass	100%	ok	
5.16	Polybag print	200	Pass	100%	ok	
5.17	Shoes wrapping	200	Pass	100%	ok	

ORDER NO.	STYLE NO.	SKU	MATERIAL / COLOR CODE	UPPER	ASSORTMENT	PAIRS / CTN	QUANTITY		WEIGHT		VOLUME (CBM)
							CTNS	PAIRS	NET	GROSS	TOTAL
CONTAINER Nº											
			SOFT KAKHY [C30391]	MICROFIBER	38-39 [3, 3]	6	1	6	5.5	7.5	0.088
			SOFT KAKHY [C30391]	MICROFIBER	[PACK A SEÑORA] 36-41 [1, 2, 3, 3, 2, 1]	12	17	204	187	256.4	2.398
			SOFT KAKHY [C30391]	MICROFIBER	[PACK B SEÑORA] 36-41 [1, 2, 2, 2, 1, 1]	9	26	234	213.2	296.4	3.379
			SOFT KAKHY [C30391]	MICROFIBER	[PACK G SEÑORA] 36-40 [1, 2, 2, 2, 1]	8	6	48	43.8	60	0.691
			SOFT BLACK [C37109]	MICROFIBER	36-38 [1, 2, 3] 40-41 [2, 3]	9	1	9	8.2	11.4	0.130
			SOFT BLACK [C37109]	MICROFIBER	[PACK A SEÑORA] 36-41 [1, 2, 3, 3, 2, 1]	12	69	828	753	1048.8	11.764
			SOFT BLACK [C37109]	MICROFIBER	[PACK B SEÑORA] 36-40 [2, 3, 4, 2, 1]	12	2	24	27	30.4	0.341
			SOFT BLACK [C37109]	MICROFIBER	[PACK B SEÑORA] 36-41 [1, 2, 2, 2, 1, 1]	9	85	765	697	969	11.047
			SOFT BLACK [C37109]	MICROFIBER	[PACK G SEÑORA] 36-40 [1, 2, 2, 2, 1]	8	122	976	890.6	1210	14.054
			SOFT BLACK [C37109]	MICROFIBER	[PACK L SEÑORA] 37-40 [1, 2, 2, 1]	6	126	756	693	957.6	11.032
			SOFT TAUPE [C27824]	MICROFIBER	[PACK A SEÑORA] 36-41 [1, 2, 3, 3, 2, 1]	12	29	348	313	440.8	4.944
			SOFT TAUPE [C27824]	MICROFIBER	[PACK B SEÑORA] 36-40 [2, 3, 4, 2, 1]	12	3	36	33	45.6	0.511
			SOFT TAUPE [C27824]	MICROFIBER	[PACK B SEÑORA] 36-41 [1, 2, 2, 2, 1, 1]	9	58	522	475.6	661.2	7.538
			SOFT TAUPE [C27824]	MICROFIBER	[PACK G SEÑORA] 36-40 [1, 2, 2, 2, 1]	8	11	88	80.3	110	1.267
			SOFT TAUPE [C27824]	MICROFIBER	[PACK L SEÑORA] 37-40 [1, 2, 2, 1]	6	1	6	5.5	7.5	0.088
							557	4850	4432.7	6124.8	69.772

ORDER NO.	STYLE NO.	SKU	MATERIAL / COLOR CODE	UPPER	ASSORMENT	PAIRS / CTN	QUANTITY		WEIGHT		VOLUME (CBM)
CONTAINER Nº							CTNS	PAIRS	NET	GROSS	TOTAL
			SOFT BLACK [C37109]	MICROFIBER	[PACK A SEÑORA] 36-41 [1,2,3,3,2,1]	12	1	12	11	15.2	0.170
			SOFT BLACK [C37109]	MICROFIBER	[PACK BJ SEÑORA] 36-41 [1,2,2,2,1,1]	9	1	9	8.2	11.4	0.130
			SOFT TAUPE [C27824]	MICROFIBER	[PACK BI SEÑORA] 36-41 [1,2,2,2,1,1]	9	1	9	8.2	11.4	0.130
			SOFT TAUPE [C27824]	MICROFIBER	[PACK G SEÑORA] 36-40 [1,2,2,2,1]	8	1	8	7.3	10	0.115
							4	38	34.7	48	0.546

Report n°	
Inspection type	FI1
Level	II
Inspection date	
Inspection place	Factory
Province	
City	
Agent	
Supplier	
Factory	
If Reinsp number of previous report	
Inspector	

	NAME	CODE
Color1	SOFT KAKHY	
Color2	SOFT BLACK	
Color3	SOFT TAUPE	
Color4		
Color5		
Color6		

Cleanliness	Brightness	Overall condition
Clean	Sufficient	Good

© Eurofins Consumer Product Assurance - All rights reserved



0 Product Picture 1



0 Product Picture 2



0 Product Picture 3



0 Product Picture 4



0 Product Picture 5



0 Product Picture 6



0 Product Picture 7



0 Product Picture 8



0 Product Picture 9



0 Product Picture 10



0 Product Picture 11



0 Product Picture 12



0 Product Picture 13



0 Product Picture 14



0 Product Picture 15



1 - D1 Uncut thread at primary visual surface minor 1



1 - D1 Uncut thread at primary visual surface minor 2



1 - D1 Uncut thread at primary visual surface minor 3



1 - D1 Uncut thread at primary visual surface minor 4



1 - D1 Uncut thread at primary visual surface minor 5



1 - D1 Uncut thread at primary visual surface minor 6



1 - D2 asymmetric shoes at 2nd visual surface major 1



1 - D2 asymmetric shoes at 2nd visual surface major 2



1 - D2 asymmetric shoes at 2nd visual surface major 3



1 - D2 asymmetric shoes at 2nd visual surface major 4



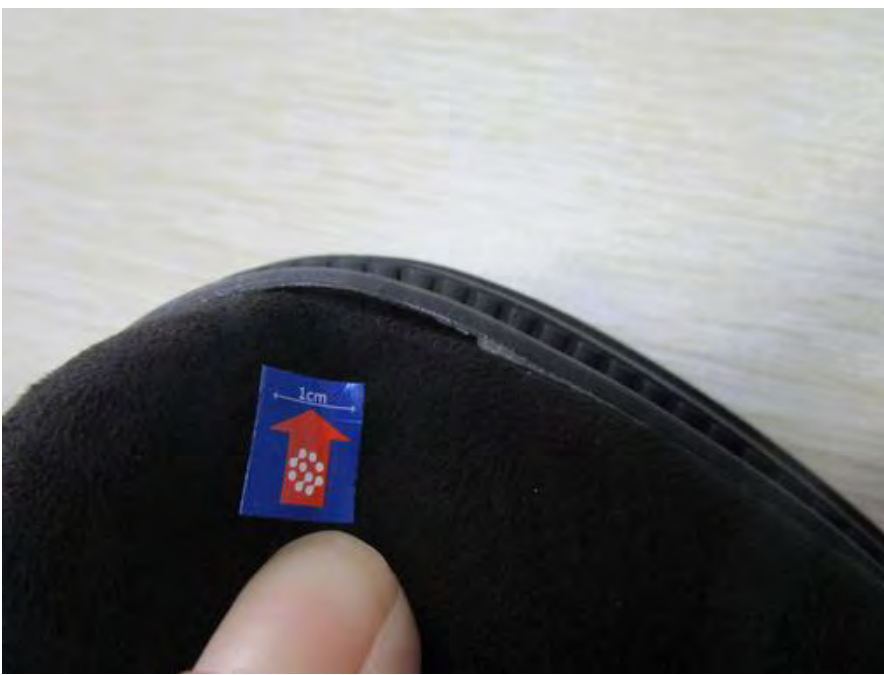
1 - D2 asymmetric shoes at 2nd visual surface major 5



1 - D2 asymmetric shoes at 2nd visual surface major 6



1 - D3 Weak cementing at second visual surface major 1



1 - D3 Weak cementing at second visual surface major 2



1 - D3 Weak cementing at second visual surface major 3



1 - D3 Weak cementing at second visual surface major 4



1 - D3 Weak cementing at second visual surface major 5



1 - D3 Weak cementing at second visual surface major 6



1 - D3 Weak cementing at second visual surface major 7



1 - D3 Weak cementing at second visual surface major 8



1 - D4 Glue mark at secondary visual surface major 1



1 - D4 Glue mark at secondary visual surface major 2



1 - D4 Glue mark at secondary visual surface major 3



1 - D4 Glue mark at secondary visual surface major 4



1 - D4 Glue mark at secondary visual surface major 5



1 - D4 Glue mark at secondary visual surface major 6



1 - D5 Counter off center at secondary visual surface major 1



1 - D5 Counter off center at secondary visual surface major 2



1 - D5 Counter off center at secondary visual surface major 3



1 - D5 Counter off center at secondary visual surface major 4



1 - D6 Pencil mark at primary visual surface major 1



1 - D6 Pencil mark at primary visual surface major 2



1 - D7 Puckering at primary visual surface major 1



1 - D7 Puckering at primary visual surface major 2



2 - C1 for soft black the metal logo position not meet sample, but meet file 100% 1



2 - C1 for soft black the metal logo position not meet sample, but meet file 100% 2



2.2 Conformity with sample-tech file 1



2.2 Conformity with sample-tech file 2



2.2 Conformity with sample-tech file 3



2.2 Conformity with sample-tech file 4



2.2 Conformity with sample-tech file 5



2.2 Conformity with sample-tech file 6



2.2 Conformity with sample-tech file 7



2.2 Conformity with sample-tech file 8



2.2 Conformity with sample-tech file 9



2.2 Conformity with sample-tech file 10



2.2 Conformity with sample-tech file 11



2.2 Conformity with sample-tech file 12



2.2 Conformity with sample-tech file 13



2.2 Conformity with sample-tech file 14



2.2 Conformity with sample-tech file 15



2.3 Conformity of raw material, fabric, handfeel 1



2.3 Conformity of raw material, fabric, handfeel 2



2.3 Conformity of raw material, fabric, handfeel 3



2.4 Conformity of brand label 1



2.5 Conformity of color 1



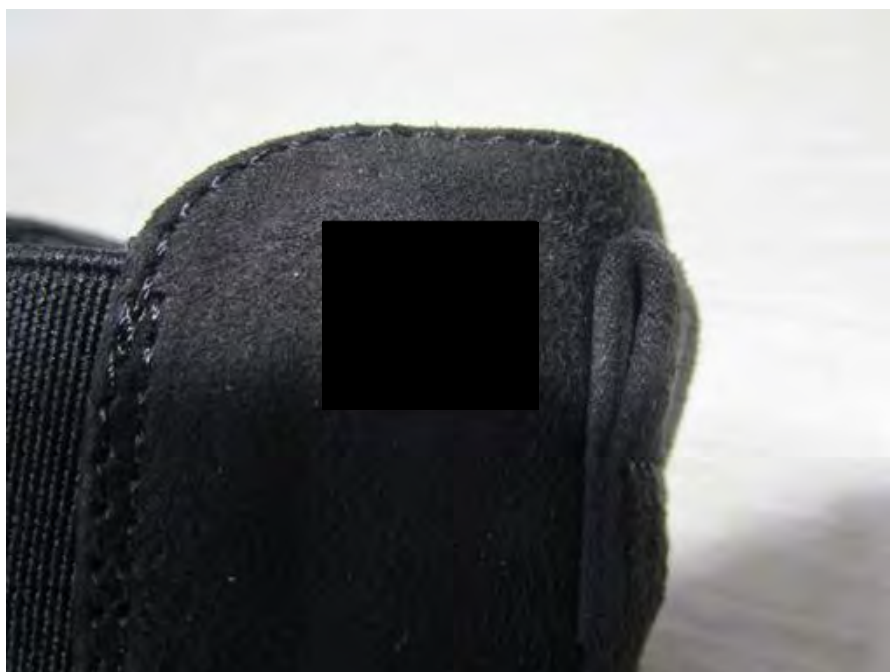
2.5 Conformity of color 2



2.5 Conformity of color 3



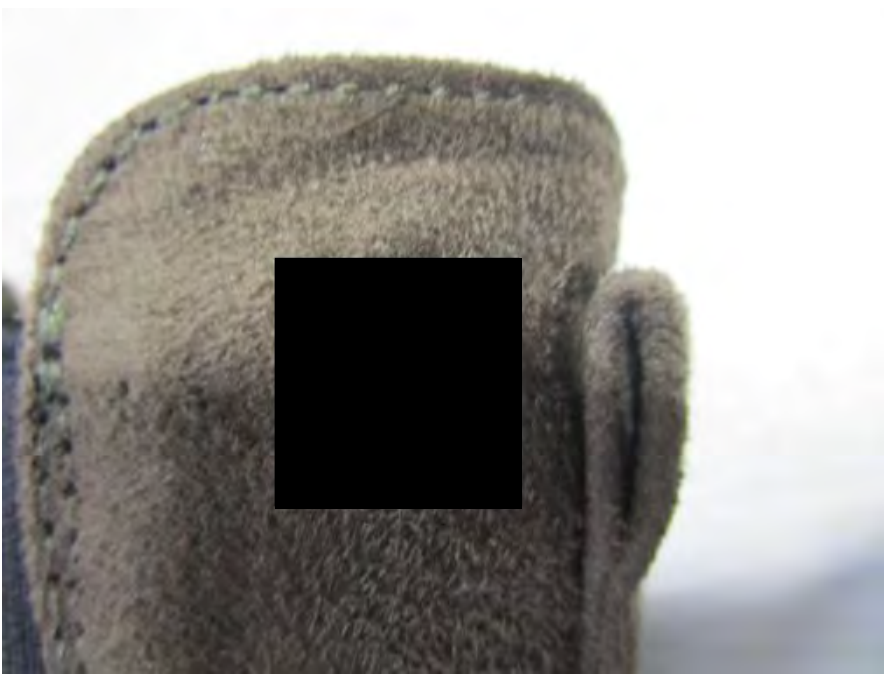
2.5 Conformity of color 4



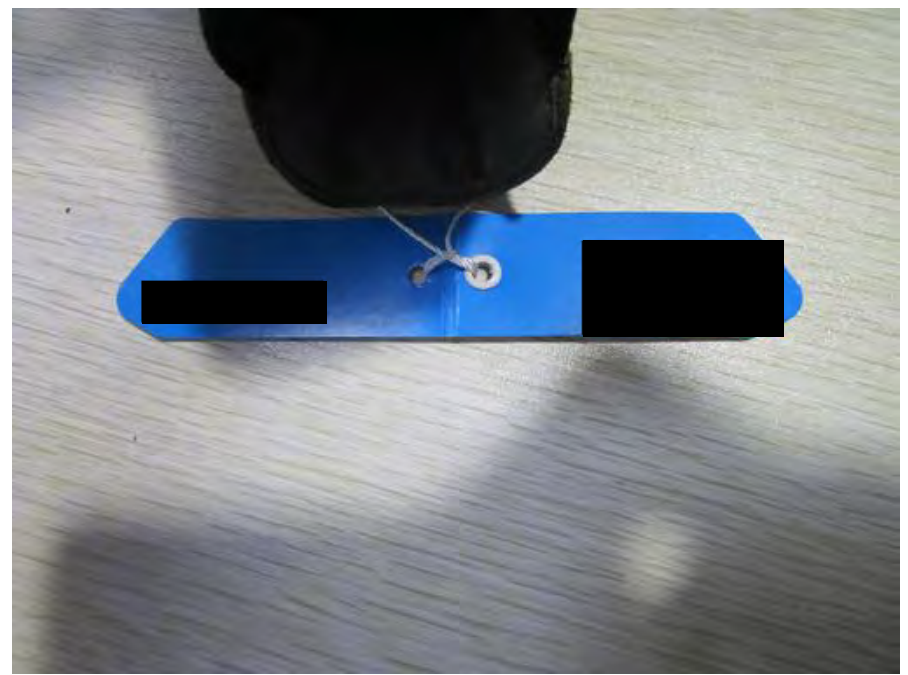
2.8 Conformity of accessories 1



2.8 Conformity of accessories 2



2.8 Conformity of accessories 3



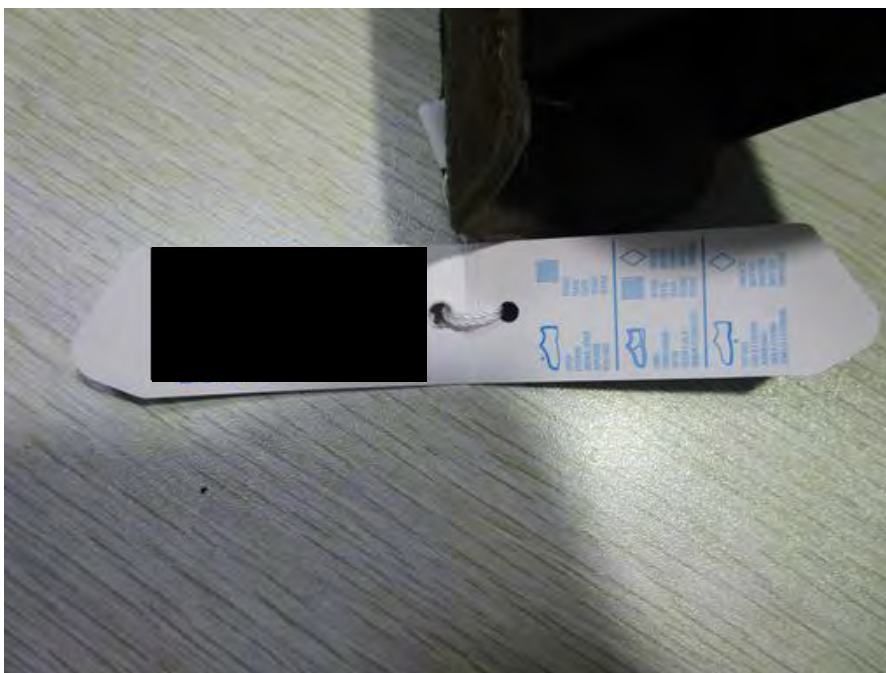
2.9 Pictogram tag 1



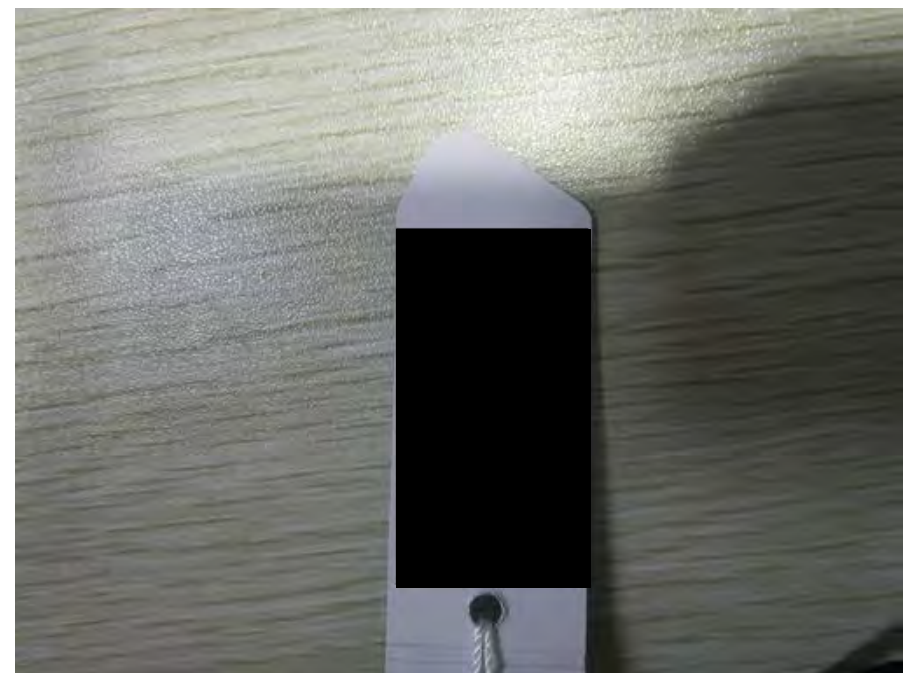
2.9 Pictogram tag 2



2.9 Pictogram tag 3



2.9 Pictogram tag 4



2.9 Pictogram tag 5



2.9 Pictogram tag 6



2.11 PO number print 1



2.12 Size marking 1



4.1 Carton drop test (1 corner, 3 edges, 100 cm) 1



4.2 Carton humidity test 1



4.3 Sewing solidity test 1



4.3 Sewing solidity test 2



4.3 Sewing solidity test 3



4.3 Sewing solidity test 4



4.4 Label resistance test 1



4.6 Embroideries-print resistance test 1



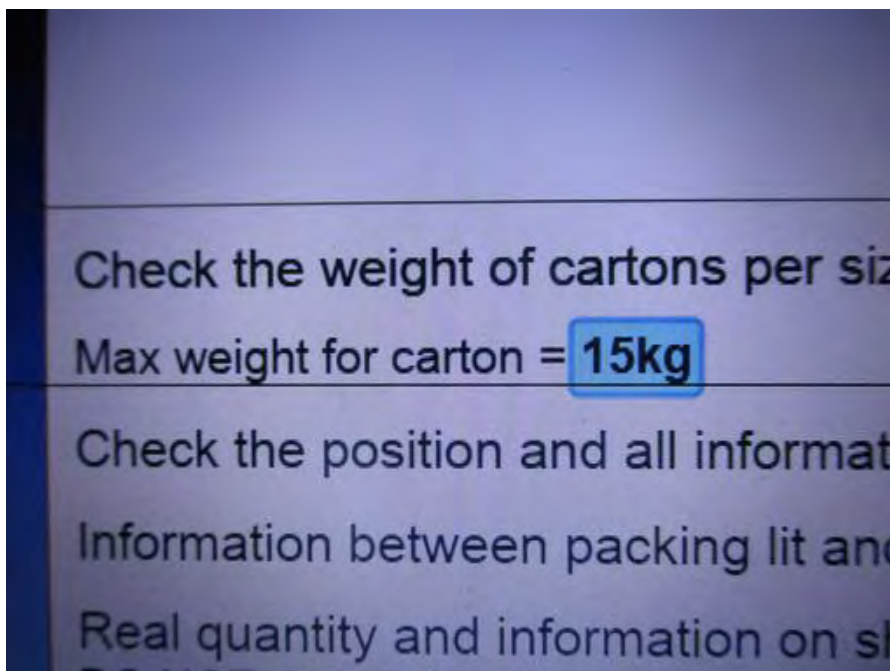
4.7 Barcode scanner 1



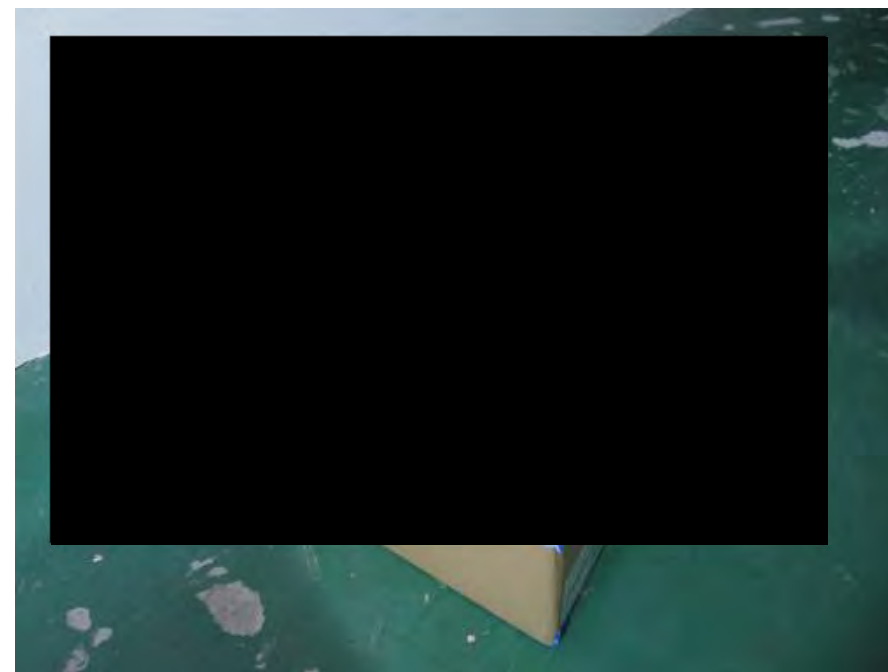
4.8 Accessories test 1



5 - P1 carton gw over 15kg for packing 12pairs cartons 1



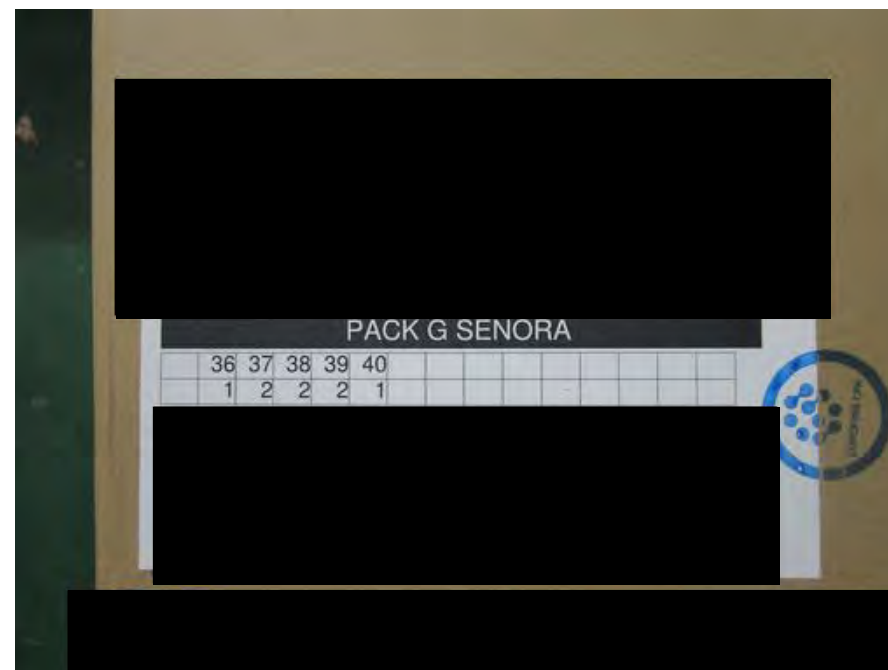
5 - P1 carton gw over 15kg for packing 12pairs cartons 2



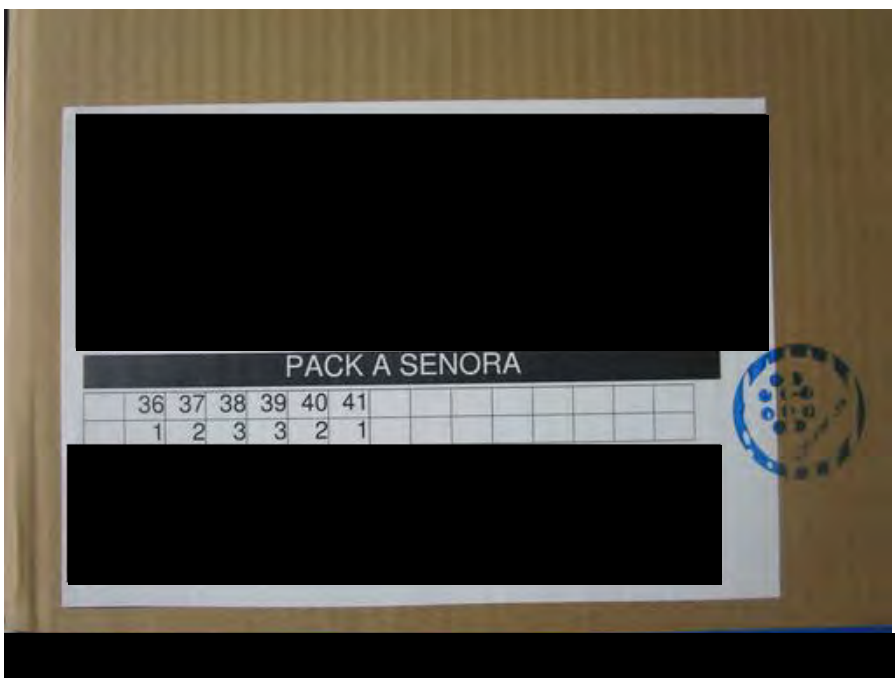
5.1 Cartons general checking 1



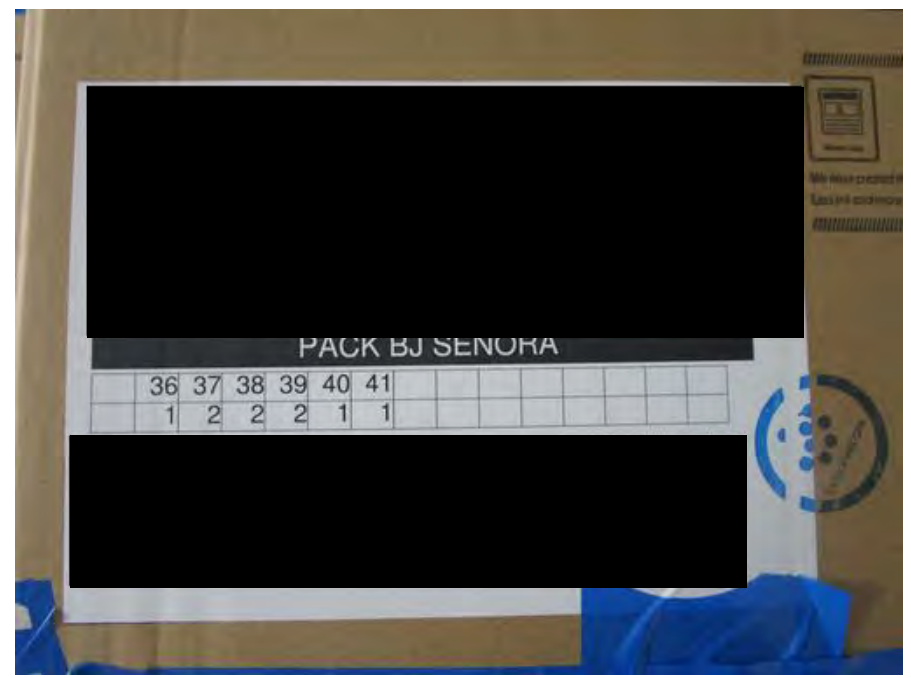
5.2 Cartons shipping marks 1



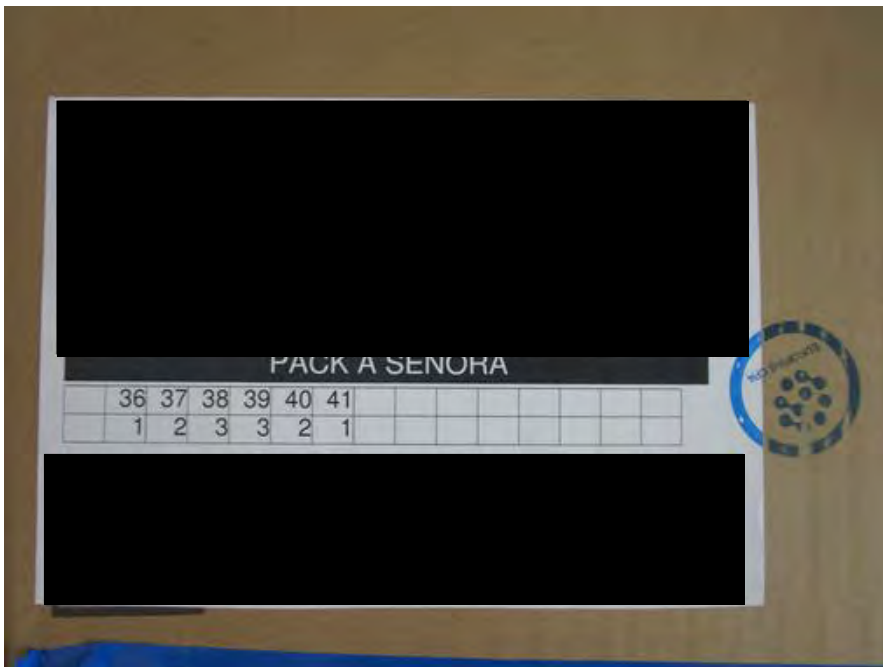
5.2 Cartons shipping marks 2



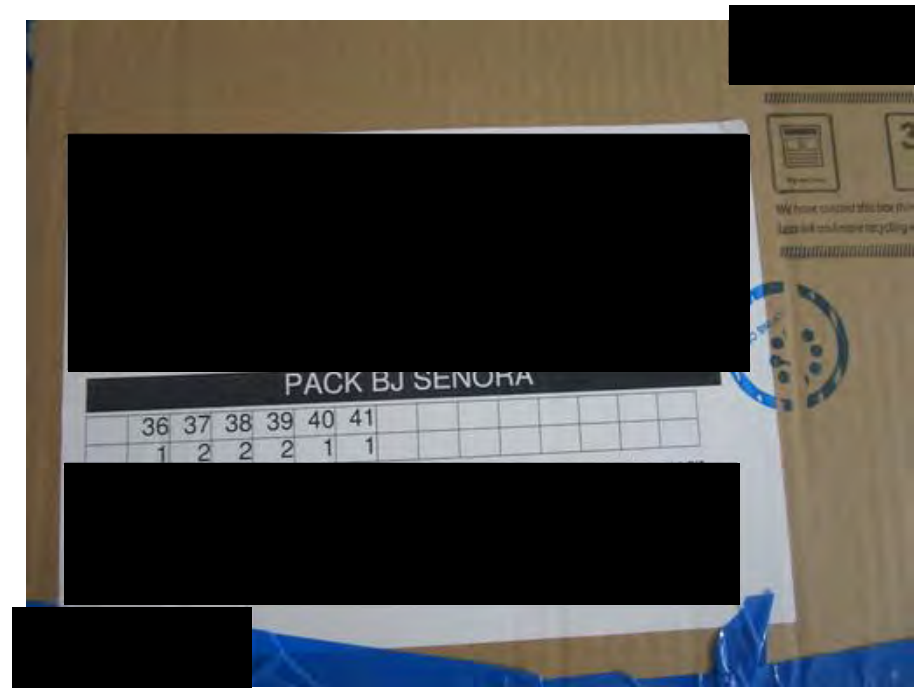
5.2 Cartons shipping marks 3



5.2 Cartons shipping marks 4



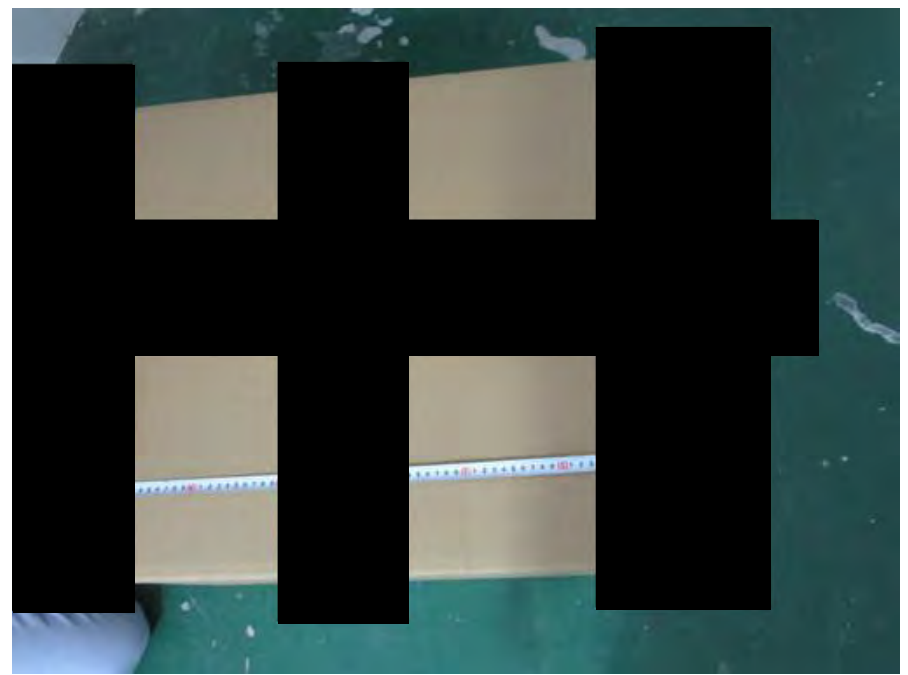
5.2 Cartons shipping marks 5



5.2 Cartons shipping marks 6



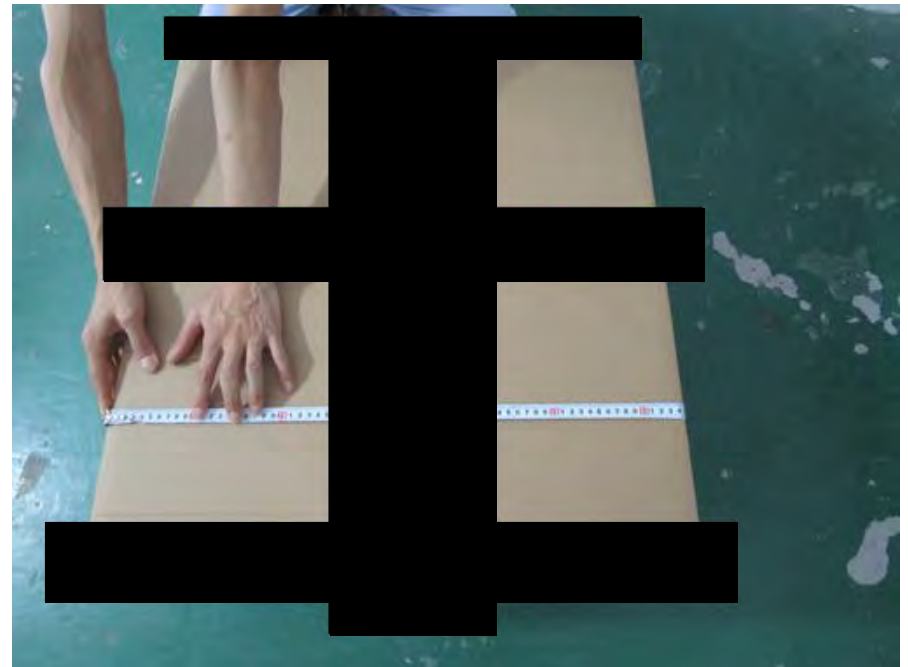
5.3 Carton closure way 1



5.4 Size of cartons 1



5.4 Size of cartons 2



5.4 Size of cartons 3



5.4 Size of cartons 4



5.4 Size of cartons 5



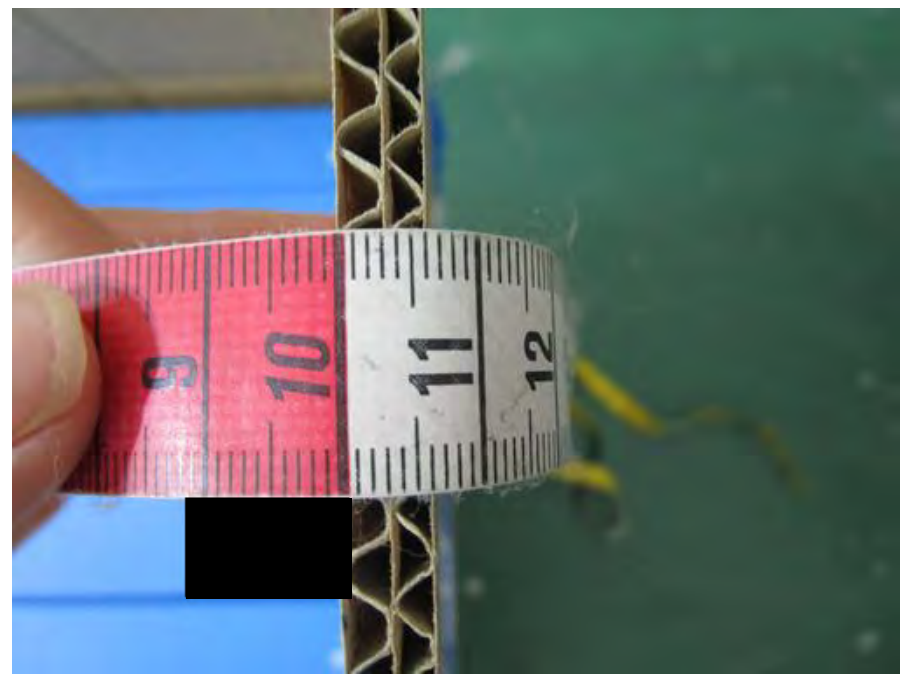
5.4 Size of cartons 6



5.5 Weight of cartons 1



5.6 Carton opening way 1



5.7 Carton thickness 1

ORDER NO.	STYLE NO.	SKU	MATERIAL / COLOR CODE	UPPER	LOWER	PAIRS / CTN	QUANTITY		WEIGHT		VOLUME (CBM)
CONTAINER Nº							CTNS	PAIRS	NET	GROSS	TOTAL
						2	1	2	1.1	1.1	0.052
						11	11	22	11.1	11.1	0.540
						10	10	20	10.1	10.1	0.478
						4	4	8	4.1	4.1	0.192
						3	3	6	3.1	3.1	0.150
						12	12	24	12.1	12.1	0.584
						13	13	26	13.1	13.1	0.644
						6	6	12	6.1	6.1	0.288
						7	7	14	7.1	7.1	0.334
						8	8	16	8.1	8.1	0.384
						9	9	18	9.1	9.1	0.434
						10	10	20	10.1	10.1	0.484
						11	11	22	11.1	11.1	0.534
						12	12	24	12.1	12.1	0.584
						13	13	26	13.1	13.1	0.634
						14	14	28	14.1	14.1	0.684
						15	15	30	15.1	15.1	0.734
						16	16	32	16.1	16.1	0.784
						17	17	34	17.1	17.1	0.834
						18	18	36	18.1	18.1	0.884
						19	19	38	19.1	19.1	0.934
						20	20	40	20.1	20.1	0.984
						55	55	110	55.1	55.1	2.732

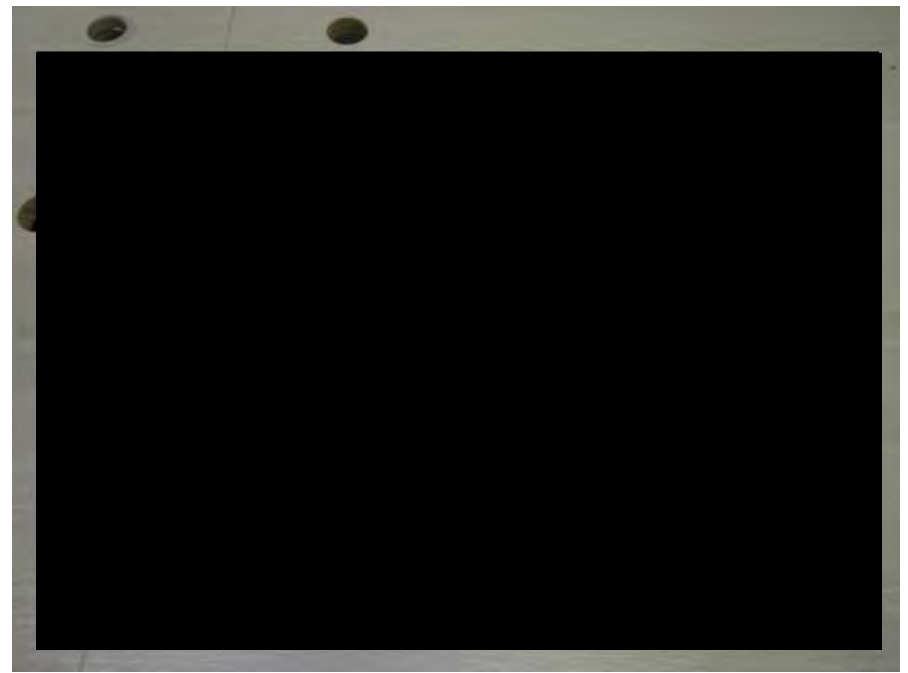
5.8 Logistic control, assortment and or homogenous cartons 1

ORDER NO.	STYLE NO.	SKU	MATERIAL / COLOR CODE	UPPER	LOWER	PAIRS / CTN	QUANTITY		WEIGHT		VOLUME (CBM)
CONTAINER Nº						CTNS	PAIRS	NET	GROSS	TOTAL	
				MICRODER		11	0	22	11	15.7	0.110
				MICRODER		4	1	9	9.0	11.9	0.080
				MICRODER		3	1	10	9.5	11.6	0.087
				MICRODER		6	7	9	7.9	91	0.511
						4	38	15.7	90	0.548	

5.8 Logistic control, assortment and or homogenous cartons 2



5.10 Silk - tissue paper to protect 1



5.10 Silk - tissue paper to protect 2



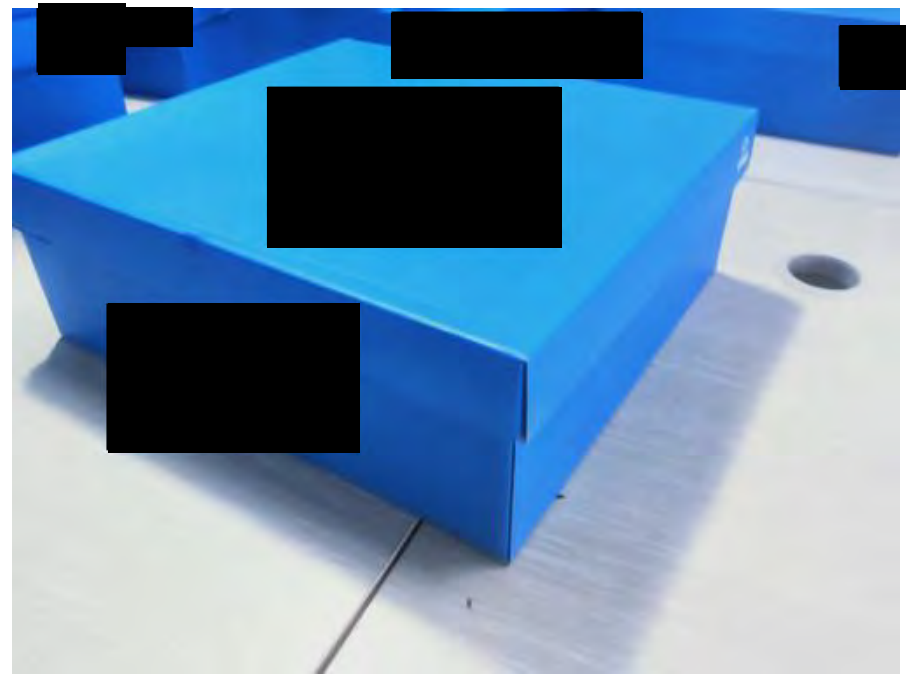
5.11 Anti-humidity bag 1



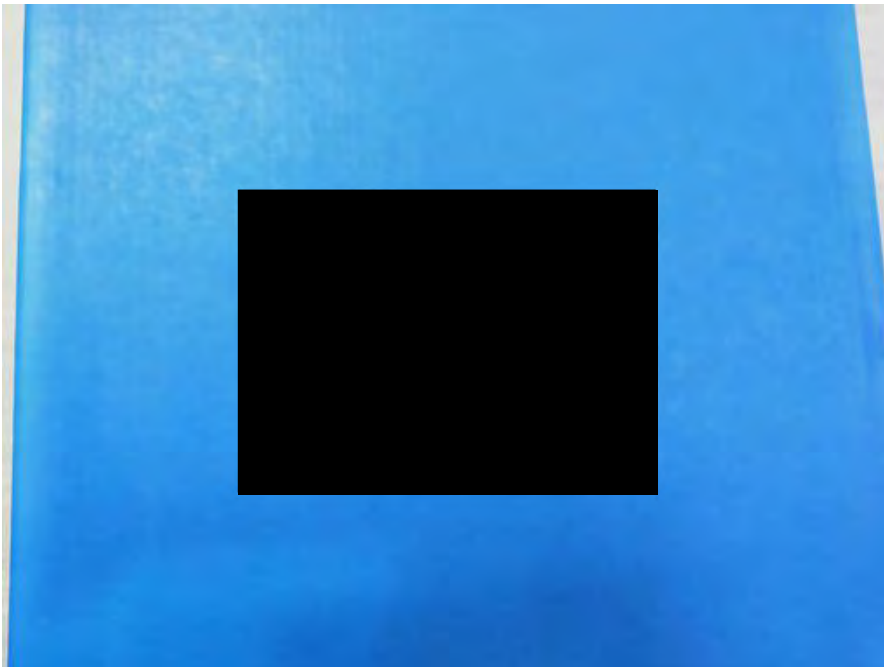
5.12 ECOBOX Print 1



5.13 Inner box 1



5.13 Inner box 2



5.13 Inner box 3



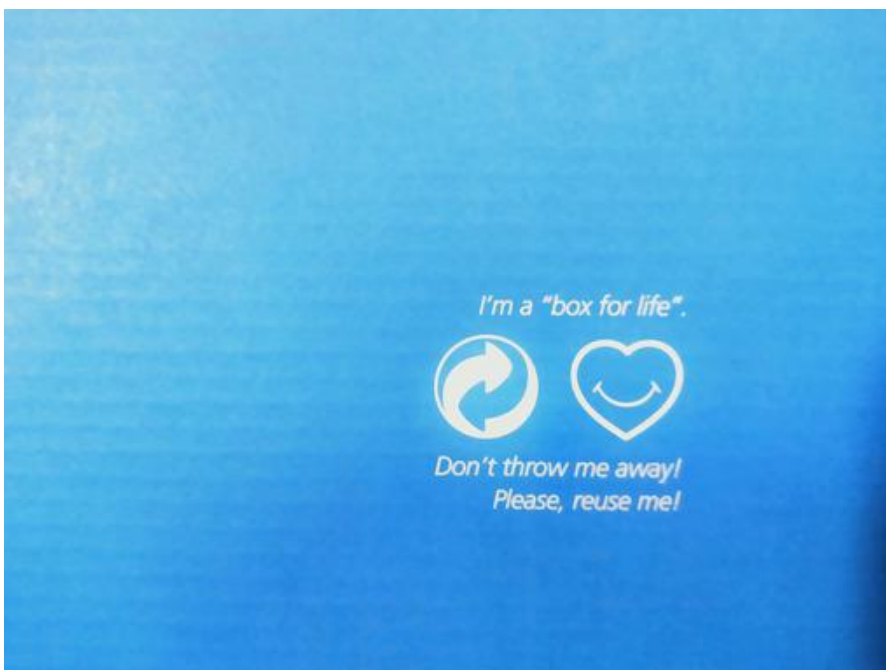
5.13 Inner box 4



5.13 Inner box 5



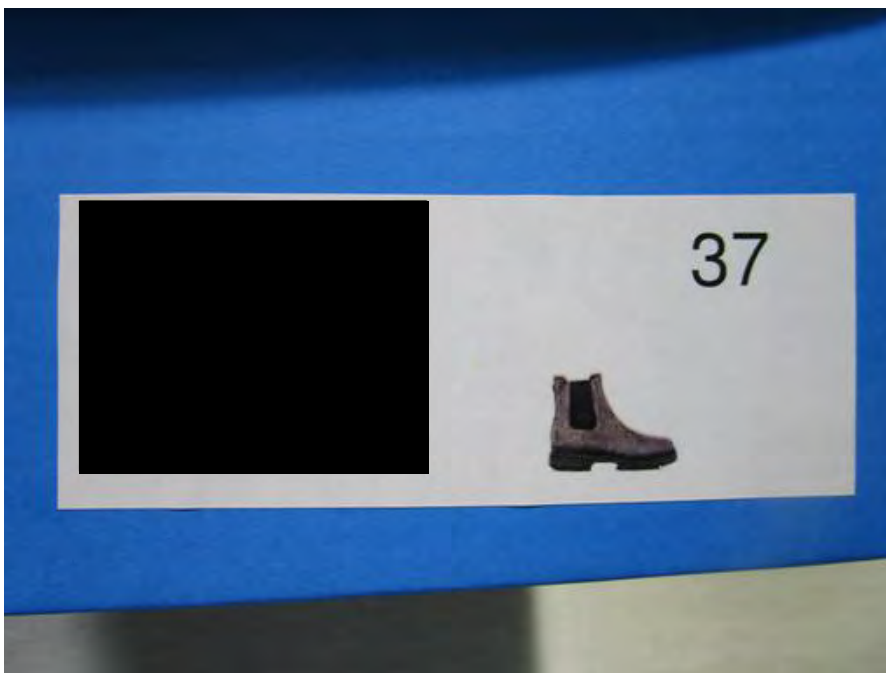
5.13 Inner box 6



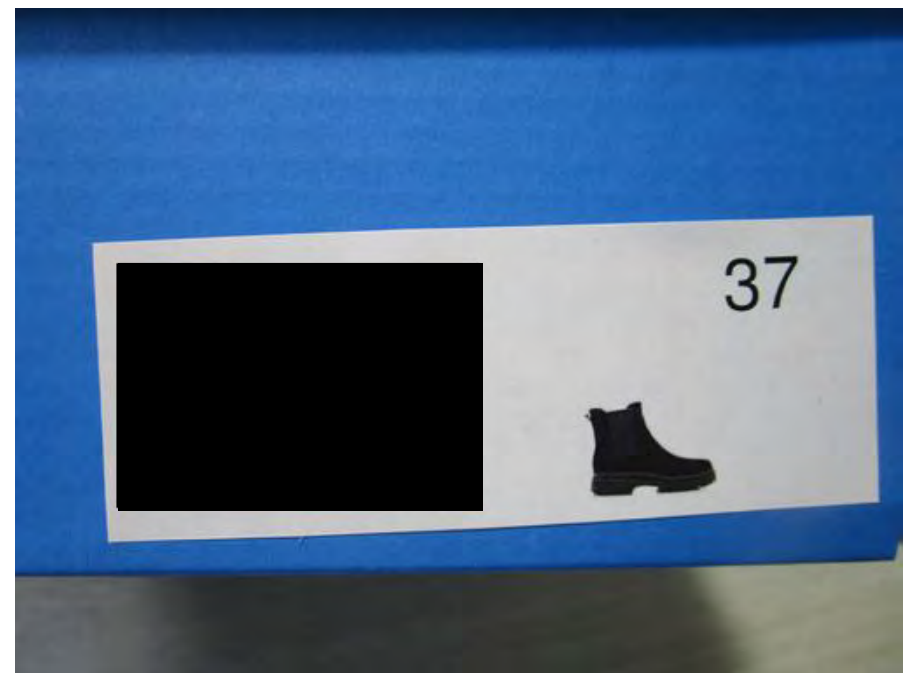
5.13 Inner box 7



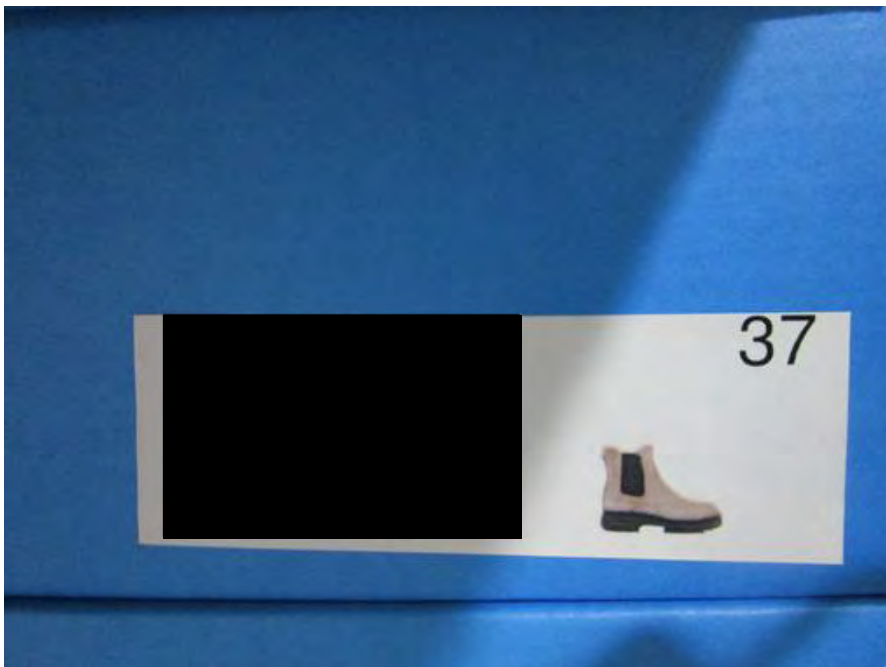
5.14 Inner box's sticker 1



5.14 Inner box's sticker 2



5.14 Inner box's sticker 3



5.14 Inner box's sticker 4



5.14 Inner box's sticker 5



5.15 Individual polybag 1



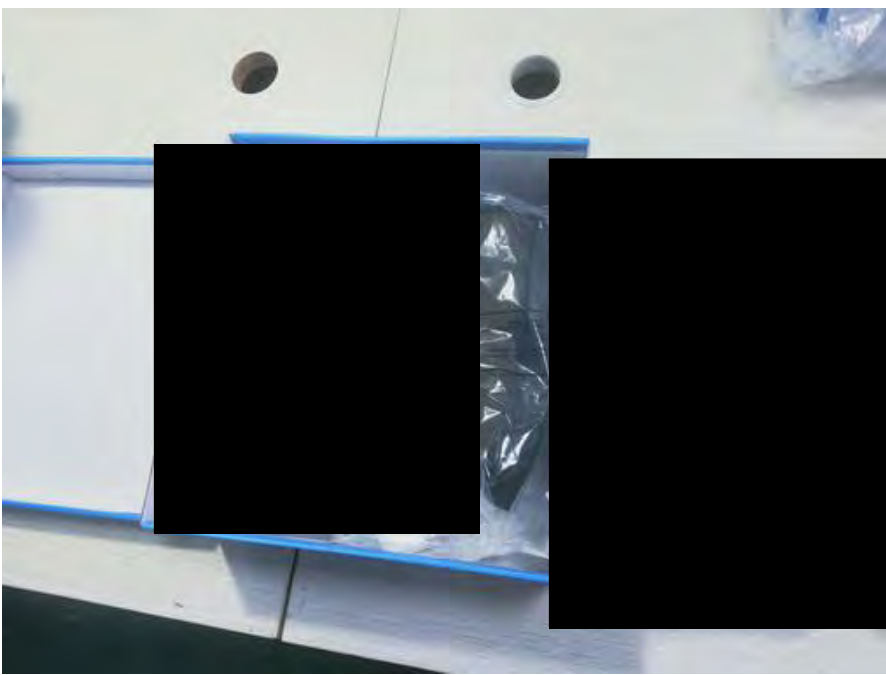
5.15 Individual polybag 2



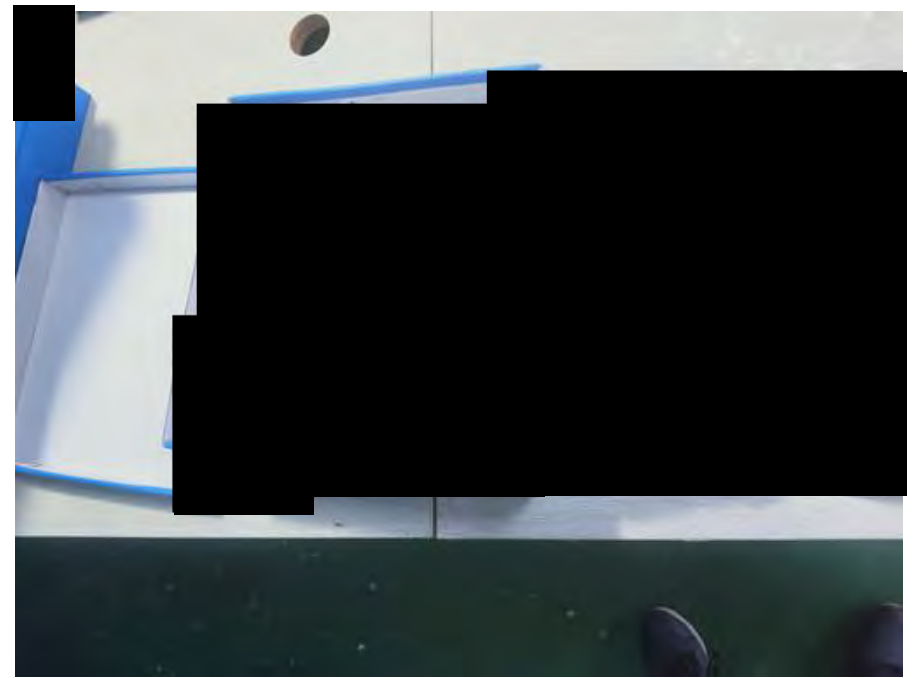
5.16 Polybag print 1



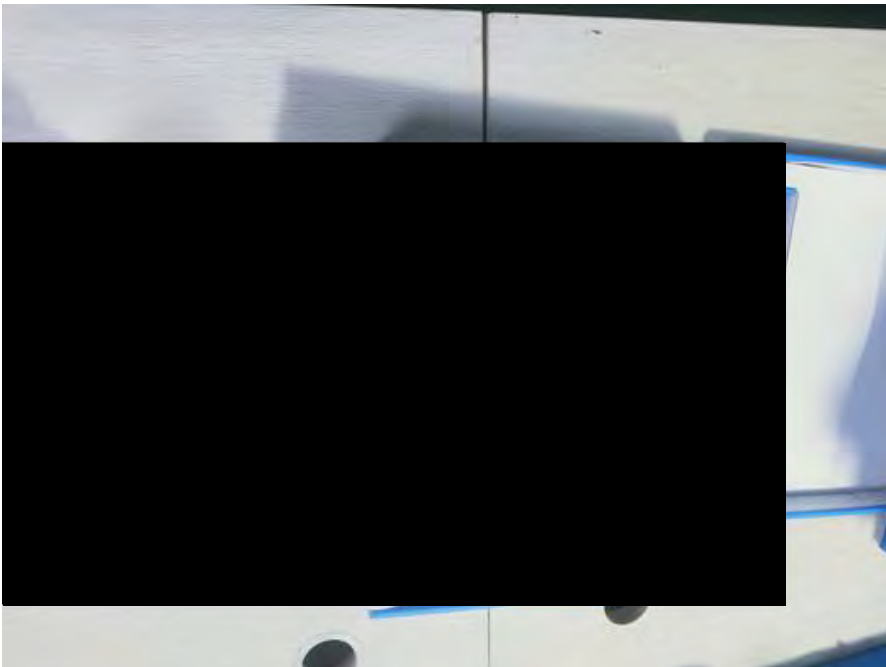
5.17 Shoes wrapping 1



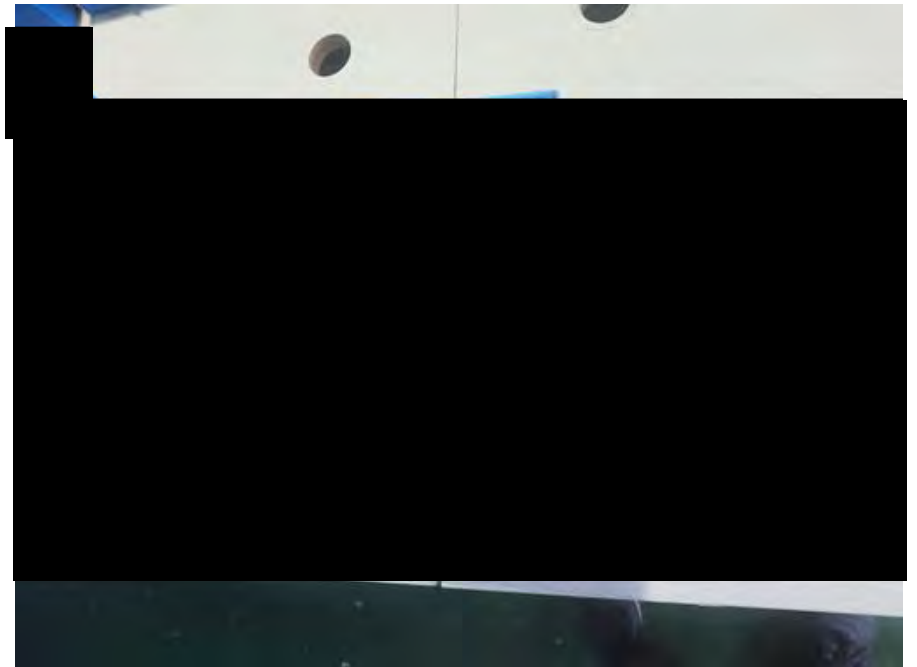
5.17 Shoes wrapping 2



5.17 Shoes wrapping 3



5.17 Shoes wrapping 4



5.17 Shoes wrapping 5



5.17 Shoes wrapping 6



5.17 Shoes wrapping 7



5.17 Shoes wrapping 8



6.1 Inspected cartons 1



6.1 Inspected cartons 2



6.3 Eurofins stamp 1



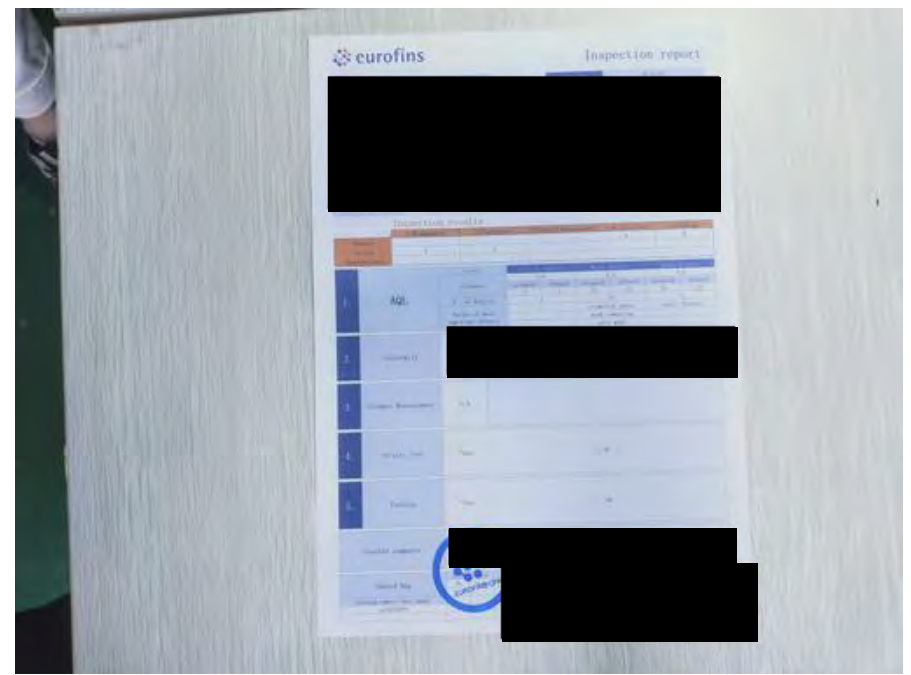
6.3 Eurofins sticker on checked pieces 1



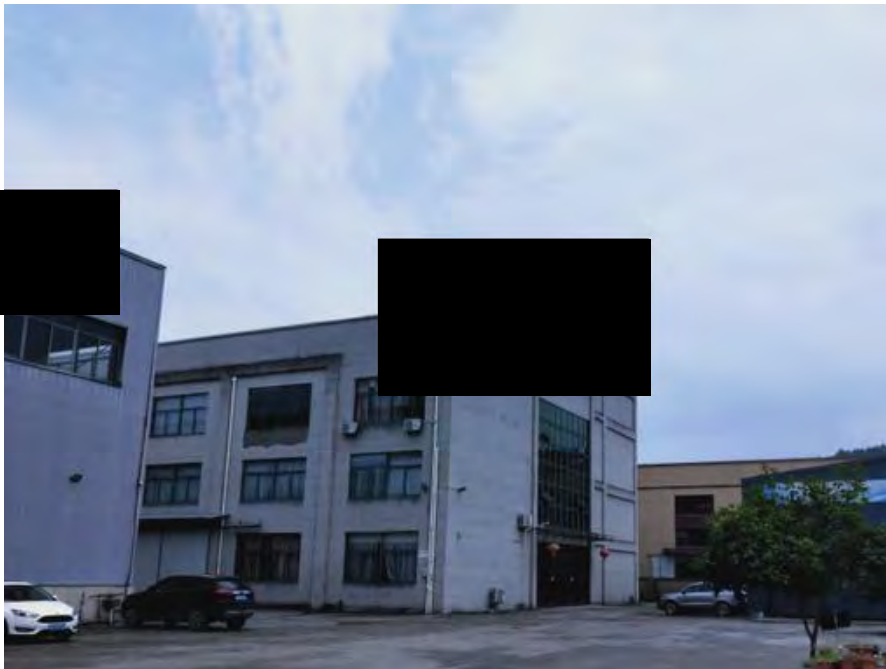
6.5 Eurofins sealed bag 1



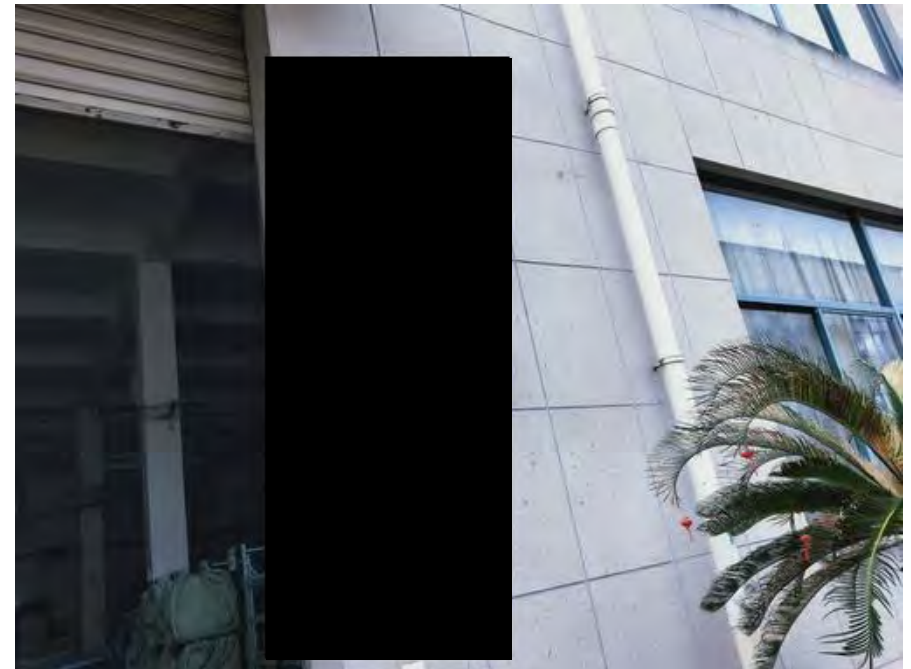
6.5 Eurofins sealed bag 2



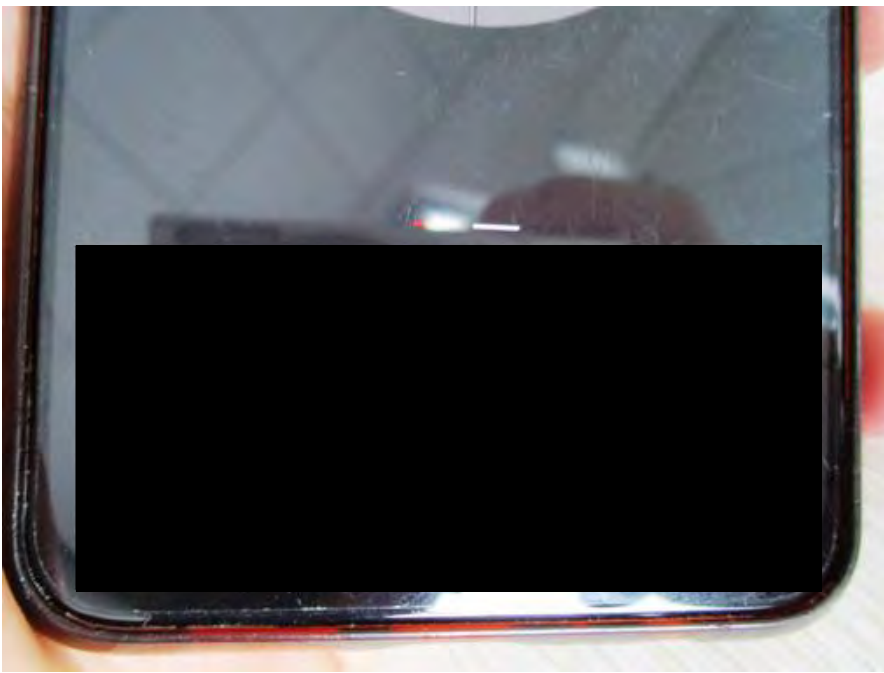
6.6 Inspection draft 1



7.3 Factory name and address 1



7.3 Factory name and address 2



7.4 GPS coordinate 1